

# HOW TO CHECK A SOURCE'S RELIABILITY



It is extremely important that you verify a source's reliability when using it for research, especially the authenticity of the information included in your work. To avoid including incorrect or misleading facts, here are some tips:

## GENERAL ADVICE

### 1 REVIEW THE CITATION/REFERENCE

Although it may seem like the last step to completing your research, the reference list is the first place you should go to verify the credibility of your source. Credible sources always include an author and the name of the publishing company, organization or domain. If your source does not include this information, you may want to reconsider using it in your work since you cannot investigate the people involved in it.



### 2 LOOK UP THE AUTHOR

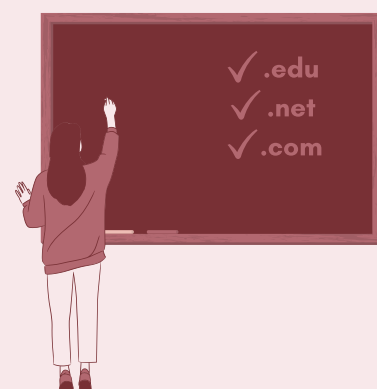
The credentials of the person or organization that published the work are important details you should always verify. Search for the following information: the academic background, the recent work they have done, and check where they have affiliations.



## Online Advice

### 1 CHECK THE DOMAIN

Always verify the domain of your source. In academic research, domains such as .edu, .org, and .net are more appropriate to use since they have more strict policies in regard to the information they can display. Other options like .com or blogs are monitored less.



### 2 CHECK THE WEBSITE INFORMATION

After checking the domain, visit the website and search if the following information is available: sources they used as reference, the latest date they updated, the people who work on the articles/information, and policies for using their source (copyright rules). If a .com or a blog domain follows these rules, they may also be a good resource for your research.



## Other Relevant Advice

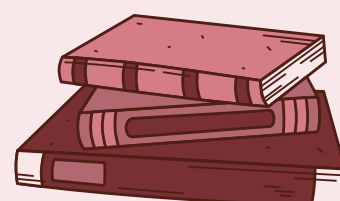
### 1 JOURNALS & MAGAZINE

Ideally, scientific and/or literary works will be included in a well-known journal or magazine. For more modern topics, it may be part of a newer container that may be used after verifying their credentials.



### 2 PUBLISHING COMPANY

Similar to journals and magazines, verify the publishing company to see who is involved in the work. This is extremely important for new editions of books and translations of work.



### 3 CHECK IF THE INFORMATION IS AVAILABLE ANYWHERE ELSE

Lastly, it's important that you check if the information is mentioned in other works. Sometimes, reviews are available that check the authenticity of information. Works that have not been reviewed or promoted should be reconsidered if they do not have credentials to back them up.

